



LiviCONSTRUCTION
rejuvenating solution

REINVENTING VALUES ON INTEGRATED SOLUTION

PROFILE OF PT LIVIA ANDALAN INDONESIA





ABOUT Us

Since established in 2012, PT Livia Andalan Indonesia has been growing as enterprising company. Forged by excellent experiences and eager in advancing knowledge. We stand for the most reliable and progressive company on integrating solution for civil & structure, mechanical, electrical, instrumentation, automation, and control in Indonesia.

We are affiliated company on LiVi Group. Now, we known as LiVi Construction.

To perform the best solution, we are fully supported by expertise on our resources and periodically update our knowledge. And, we are supported the latest update of advanced knowledge and technology. The whole company commit to held the Good Corporate Governance.

Furthermore, we deliver engineering, procurement and construction service on fully customized for any needs. Our wide range services are coal & minerals, petrochemicals, power plants, port handling facilities, commercial & industrial facilities.

VISION

i To be a world class company on 2020i

MISSION

Fostering the company to redefine for integrated solution on civil & structure, mechanical, electrical, instrumentation, automation, and control on advanced stage of effective & efficiency.

Our **VALUES**

Our professional culture is stated on its values, **FOCUS**

• **F**ostering; encourage to advancing knowledge.

• **O**riented; detailed on goal and achievements.

• **C**ommitted; integrity to be trustworthy.

• **U**nify; creating effective & solid teamwork.

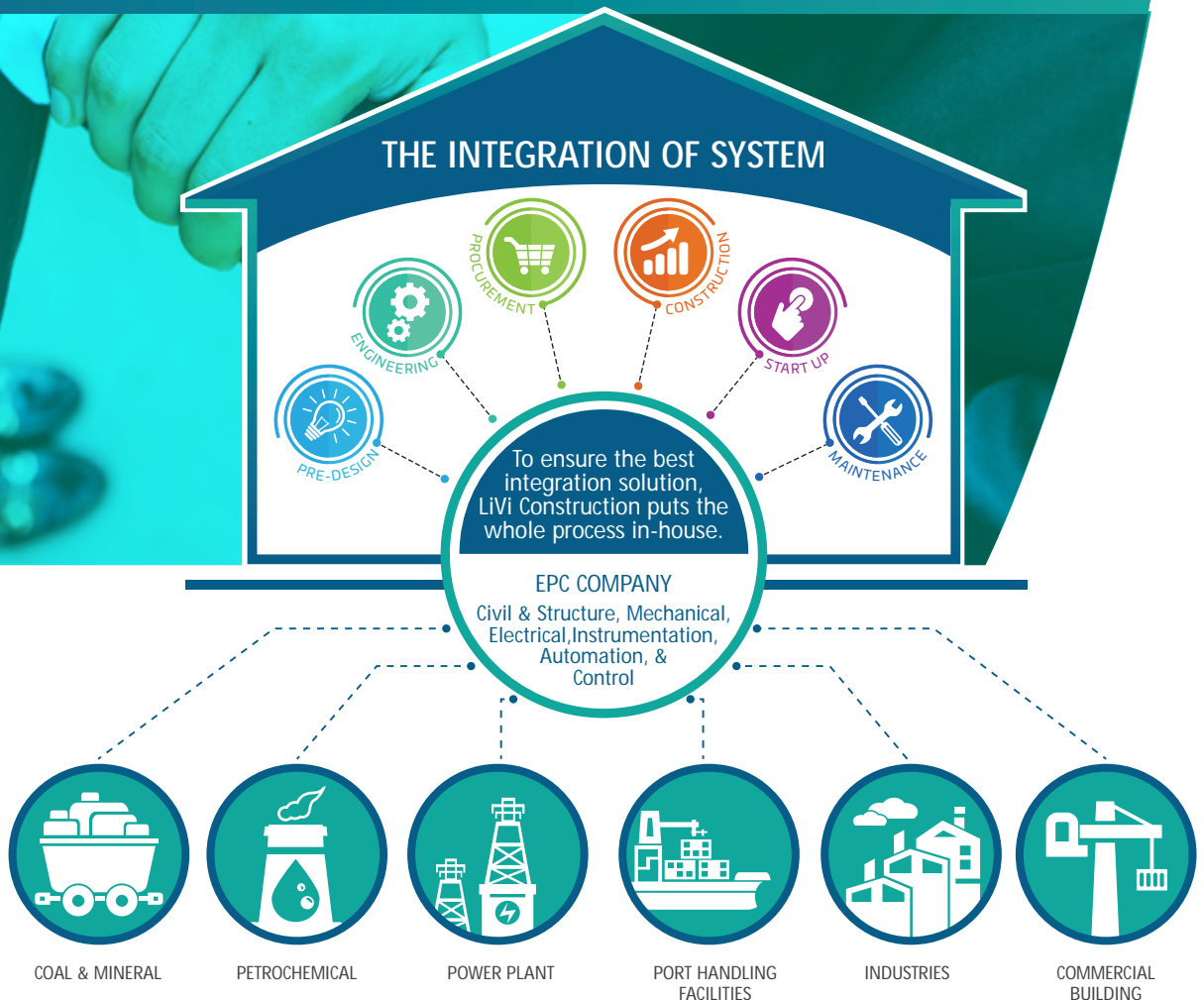
• **S**triving; dedicated performance.



"Stay **FOCUS**"



Our CORE





Our **SERVICES**

Engineering • Procurement • Construction



ENGINEERING Service

- i Fully supported by skilled personnel in desk & field, management, scheduling, cost controlling, quality control, quality assurance, training, test & commissioning.
- i Embedded by the latest technology, engineering tools & software, and application to ensure the best solution for customer that comply with international and local standard
- i Includes conceptual design, basic design, detailing design & software development.

The engineering expertise are encompassed the following areas :

- Civil & Structure
- Mechanical
- Electrical
- Instrumentation
- PLC, Automation & Control System
- SCADA System

PROCUREMENT Service

Procurement covers supplying the following materials :

- LV & MV Switchgear
- Neutral Grounding Resistor
- Overhead Line Transmission
- Transformer
- Cabling & Cable Support System
- Lighting & Receptacle System
- Lightning & Grounding System
- UPS, Battery & Charger
- Public Address & Communication System
- CCTV
- HVAC System
- Fire Alarm & Clean Agent System
- Safety Device & Instrumentation
- PLC & Automation System
- SCADA System



CONSTRUCTION Service

The construction service conducts the whole work;

- i Installation
- i Testing
- i Commissioning

In the field of services, the scope of activities includes:

- Erection
- Site Fabrication
- Electrical Equipment Installation
- Instrumentation Device Installation
- Termination
- Electrical Measurement
- Continuity & Loop Test
- Testing & Commissioning



Our REFERENCES

PT PLN | 2018

EXTENSION OF CONVEYOR 1 & 2, EMERGENCY TELESCOPIC CHUTE AND SHIP UNLOADER AT PLTU PAITON UNIT 9



Outline of Project :

Development of Extension of Conyeyor 1 & 2, Emergency Telescopic Chute & Ship Unloader

Scope of Work :

Engineering, Procurement, and Construction (EPC) for Electrical, Instrumentation, Automation & Control package such as:

- MV & LV Switchgear
- Cabling & Cable Support System
- Lighting & Receptacle System
- Lightning & Grounding System
- Safety Device & Instrumentation
- PLC & SCADA System
- Installation, Testing & Commissioning
- Training

KEMENTERIAN KELAUTAN DAN PERIKANAN RI | 2017

INTEGRATED COOL STORAGE



Outline of Project :

Development Integrated Cool Storage (ICS) Capacity 100 Tons.

Scope of Work :

Mechanical, Electrical & Plumbing (MEP) Area Cool Storage & Employee Building Facilities package such as:

- LV Switchgear
- Cabling & Cable Support System
- Lighting & Receptacle System
- Lightning & Grounding System
- Installation
- Testing & Commissioning



PT PLN | 2017

MOBILE POWER PLANT & FIXED TYPE GAS ENGINE POWER PLANT AT BIAK-TANJUNG SELOR-MERAUKE-SERAM-LANGGUR



Outline of Project :

Development Mobile Power Plant & Fixed Type Gas Engine of 15 MW (Biak & Tanjung Selor) dan 20 MW (Merauke, Seram dan Langgur).

Scope of Work :

Engineering, Procurement and Construction (EPC) for Electrical, Instrumentation, Automation and Control package such as:

- MV & LV Switchgear
- Transformer
- Cabling & Cable Support System
- Lighting & Receptacle System
- Lightning & Grounding System
- UPS, Battery & Battery Charger
- Field Device & Instrumentation
- DCS System
- Public Address & Communication System
- Fire Protection & Clean Agent System
- Installation, Testing & Commissioning
- Training

PT. INDONESIA POWER | 2016

CONVEYOR SYSTEM FOR JETTY 2 TO PLTU SURALAYA BANTEN 1



Outline of Project :

Development Conveyor System for Jetty-2 to PLTU Suralaya Banten 1.

Scope of Work :

Engineering, Procurement and Construction (EPC) for Electrical, Instrumentation, Automation & Control package such as:

- MV & LV Switchgear
- Transformer
- Cabling & Cable Support System
- Lighting & Receptacle System
- Lightning & Grounding System
- UPS, Battery & Battery Charger
- Safety Device & Instrumentation
- PLC & SCADA System
- Public Address & Communication System
- Fire Protection System
- Installation, Testing & Commissioning
- Training



Our REFERENCES

PT PUPUK KALTIM | 2015

UREA BULK STORAGE & CONVEYOR SYSTEM PROJECT



Outline of Project :

Development of Urea Bulk Storage complete with conveyor facility consist of Portal Scraper, conveyor system, Tripper System, Bagging System, and Dehumidifier.

Scope of Work :

Engineering, Procurement and Construction (EPC) for Electrical, Instrumentation, Automation and Control package such as:

- MV & LV Switchgear
- Transformer
- Cabling & Cable Support System
- Lighting & Receptacle System
- Lightning & Grounding System
- UPS, Battery & Battery Charger
- Safety Device & Instrumentation
- PLC & SCADA System
- Public Address & Communication System
- Fire Protection & Clean Agent System
- Installation, Testing & Commissioning
- Training

PT BUKIT ASAM | 2015

TANJUNG ENIM COAL HANDLING FACILITIES PHASE-4 (CHF-4)



Outline of Project :

Development of Coal Handling Facilities at MTBU-B Stage 2 and OLC MTB and Banko Barat Load In & Load Out System consist of Feeder Breaker, Reclaim Feeder, Train Load Out and Overland Conveyor.

Scope of Work :

Engineering, Procurement and Construction (EPC) for Electrical, Instrumentation, Automation & Control package such as:

- MV & LV Switchgear (E&C)
- Transformer (E&C)
- 20kV Overhead Line Transmission (EPC)
- Cabling System (E&C)
- Cable Support System (EPC)
- Lighting & Receptacle System (EPC)
- Lightning & Grounding System (EPC)
- UPS, Battery & Battery Charger (EPC)
- Safety Device & Instrumentation (EPC)
- PLC & SCADA System (EPC)
- Public Address & Communication System (EPC)
- Installation, Testing & Commissioning
- Training



PT BUKIT ASAM | 2015

TANJUNG ENIM COAL HANDLING FACILITIES PHASE-5 (CHF-5)



Outline of Project :

Development of Coal Handling Facilities at Existing Location of Muara Tiga Besar, Consist of Reclaim Feeder, Reclaim Conveyor, Quadrol Crusher and Overhaul Conveyor.

Scope of Work :

Engineering, Procurement and Construction (EPC) for Electrical, Instrumentation, Automation & Control package such as:

- MV & LV Switchgear
- Transformer
- 20kV Overhead Line Transmission
- Cabling & Cable Support System
- Lighting & Receptacle System
- Lightning & Grounding System
- UPS, Battery & Battery Charger
- Safety Device & Instrumentation
- PLC & SCADA System
- Public Address & Communication System
- Installation, Testing & Commissioning
- Training

PT ANEKA TAMBANG | 2014

NON CRUCIBLE ESF IV ANEKA TAMBANG



Outline of Project :

Develop Non Crucible system for ESF IV consist of Hot Charge Crane, Top Bin modification, Furnace auxiliaries, Tapping metal equipment for Metal Slag & Slag Granulation.

Scope of Work :

Engineering, Procurement and Construction (EPC) for Electrical, Instrumentation, Automation & Control package such as:

- MV & LV Panel (C)
- Transformer (C)
- Power Cable (C)
- Field Panel (EPC)
- Control & Instrument Cable (EPC)
- Cable Support System (EPC)
- Field Instrument (C)
- DCS & HCC PLC System (C)
- Lighting & Receptacle System (EPC)
- Lightning & Grounding System (EPC)
- HVAC System (EPC)
- Installation, Testing & Commissioning

Our REFERENCES

PT PUSRI | 2014

JETTY, COAL HANDLING SYSTEM, AND COAL STORAGE & FACILITIES



Outline of Project :

Development of Jetty, Coal Storage and Conveyor System.

Scope of Work :

Engineering, Procurement and Construction (EPC) for Electrical, Instrumentation, Automation and Control package such as:

- MV & LV Switchgear
- Transformer
- Cabling & Cable Support System
- Lighting & Receptacle System
- Lightning & Grounding System
- UPS, Battery & Battery Charger
- Safety Device & Instrumentation
- PLC & SCADA System
- Public Address & Communication System
- Fire Protection System
- Installation, Testing & Commissioning
- Training

PT PUSRI | 2013

UREA BULK STORAGE (UBS) IIB & CONVEYOR SYSTEM (CS)



Outline of Project :

Development of Urea Bulk Storage complete with conveyor facility consist of Portal Scraper, conveyor system, Tripper System, Bagging System, and Dehumidifier.

Scope of Work :

Engineering, Procurement and Construction (EPC) for Electrical, Instrumentation, Automation and Control package such as:

- MV & LV Switchgear
- Transformer
- Cabling & Cable Support System
- Lighting & Receptacle System
- Lightning & Grounding System
- UPS, Battery & Battery Charger
- Safety Device & Instrumentation
- Safety Device & Instrumentation
- PLC & SCADA System
- Public Address & Communication System
- Fire Protection & Clean Agent System
- Installation, Testing & Commissioning
- Training



PT BPT BUKIT ASAM | 2012

TARAHAN PORT EXPANSION PHASE 5



Outline of Project :

Development of 3000 TPH Coal Handling Facility Consist of Wagon Un-loader, Conveyor System and Ship Loader.

Scope of Work :

Engineering, Procurement and Construction (EPC) for Electrical, Instrumentation, Automation and Control package such as:

- MV & LV Switchgear
- Transformer
- Neutral Grounding Resistor
- Cabling & Cable Support System
- Lighting & Receptacle System
- Lightning & Grounding System
- UPS, Battery & Battery Charger
- Safety Device & Instrumentation
- PLC & SCADA System
- Public Address & Communication System
- CCTV System
- Cathodic Protection
- Installation, Testing & Commissioning
- Training

PT NUSA TAMBANG PRATAMA | 2011

ASAM-ASAM COAL PREPARATION PLANT & OVERLAND CONVEYOR



Outline of Project :

Development of 2400 TPH Coal Handling Facility Consist of Crushing System and Transport to Port via about 9000 meters Overland Conveyor.

Scope of Work :

Engineering, Procurement and Construction (EPC) for Electrical, Instrumentation, Automation and Control package such as:

- Genset & Control Panel 3 x CAT 3516
- MV Panel
- MCC Panel
- VVVF Panel
- Neutral Grounding Resistor
- PLC & SCADA System
- Installation, Testing & Commissioning



Our REFERENCES

PROFESSIONAL References

PT PLN | Merauke-Biak-Langgur-Seram-Tanjung Selor | 2017
Mobile Power Plant & Fixed Type Gas Engine Power Plant Package III

PT. Indonesia Power | Cilegon, Banten | 2016
Conveyor System for Jetty 2 to PLTU Banten 1

PT. Pupuk Kaltim | Bontang, Kalimantan Timur | 2015
Urea Bulk Storage & Conveyor System Project

PT. Bukit Asam | Palembang, Sumatera Selatan | 2015
Tanjung Enim Coal Handling Facilities Phase 4

PT. PUSRI | Palembang, Sumatera Selatan | 2014
NPK Fushion Plant Capacity 100.000 MTPY

PT. Bukit Asam | Tanjung Enim, Sumatera Selatan | 2014
Tanjung Enim Coal Handling Facilities Phase 5

PT. PLN | Tanjung Enim, Sumatera Selatan | 2014
Ash Handling Facilities PLTU Tanjung Enim

PT. Aneka Tambang | Pomalaa, Sulawesi Tenggara | 2014
Non Crucible ESF-IV Aneka Tambang

PT. PUSRI | Palembang, Sumatera Selatan | 2014
Jetty, Coal Handling System, and Coal Storage & Facilities

PT. PUSRI | Palembang, Sumatera Selatan | 2013
Urea Bulk Storage 2B & Conveyor System

PT. Bukit Asam | Tarahan, Lampung | 2012
Tarahan Port Expansion Phase 5

PT. Kaltim Prima Coal | Sangatta, Kalimantan Timur | 2012
Barge Loading Facility Extension Project

PT. Krakatau Bandar Samudera | Cilegon, Banten | 2012
Feasibility Study for New Jetty Facilities

PT. Krakatau Bandar Samudera | Cilegon, Banten | 2012
Feasibility Study for Interconnecting Belt Conveyor

PT. Aneka Tambang | Pomalaa, Sulawesi Tenggara | 2012
Feasibility Study for Modernization & Optimization ANTAM Fe-Ni Halmahera (Phase-1)

PT. Aneka Tambang | Pomalaa, Sulawesi Tenggara | 2012
Feasibility Study for Modernization & Optimization Fe-Ni 1 Plant

PT. Unbrown Coal Indonesia | Satui, Kalimantan Selatan | 2009
Basic Design for Upgraded Brown Coal Plant Modernization

PT. Merak Energi | Merak, Banten | 2012
Merak Energy Material Handling System

PT. Nusa Tambang Pratama | Batulicin, Kalimantan Selatan | 2011
Batulicin Coal Handling Facilities

PT. Indonesia Power | Suralaya, Banten | 2010
Coal Handling Facility IP-8

PT. Nusa Tambang Pratama | Asam-Asam, Kalimantan Selatan | 2010
CPP & OLC Asam-Asam Coal Mine Project

PT. Shibaura Shearing | MM2100, Cibitung, Bekasi | 2010
Semi Gantry Crane

PT. Semen Tonasa | Tonasa, Sulawesi Selatan | 2010
Baghouse Filter 89,500 Nm³/h for 2 35 MW Tonasa Power Plant

PT. Indocement | Cibinong, Jawa Barat | 2010
Indocement Recovery Material Handling System

PT. PLN | Maluku Utara | 2010
Baghouse Filter 75,000 m³/h for 2 7 MW PLTU MALUT

PT. Bharinto Ekatama | Melak, Kalimantan Timur | 2010
Coal Crushing Plant PT. Bharinto Ekatama

PT. Pupuk Kaltim | Bontang, Kalimantan Timur | 2010
Coal Boiler Plant PT. Pupuk Kaltim

PT. Pupuk Kaltim | Bontang, Kalimantan Timur | 2010
Bontang Ammonium Nitrat Prill Project

PT. Krakatau Bandar Samudera | Cilegon, Banten | 2010
Cigading International Bulk Terminal Stage-1

PT. Unbrown Coal Indonesia | Satui, Kalimantan Selatan | 2009
Upgraded Brown Coal Plant Modernization

PT. Indominco Mandiri | Bontang, Kalimantan Timur | 2009
Workshop, Crushing & Skyline Conveyor for East Block

Development System PT. Indominco Mandiri

PT. Meratus Jaya Iron Steel | Batulicin, Kalimantan Selatan | 2009
Material Handling System for 315.000 TPY Direct Reduction

Rotary Kiln Plant

PT. Yamatogawa | Tangerang, Banten | 2009
Drying Room and Steam Boiler for Paper Core

PT. Petrokimia Gresik | Kuala Tanjung, Sumatera Utara | 2008
ROP I / II and NPK III / IV Petrokimia Gresik Project

PT. Shibaura Shearing | MM2100, Cibitung, Bekasi | 2008
Cranes for SSI 2nd Factory Cap 10T. 5T and 3T (21 Units Crane

Overhead & Semi Gantry)

PT. Aneka Tambang | Pomalaa, Sulawesi Tenggara | 2008
Bag Filter Fe-Ni 2

PT. Yamaha Motor Manufacturing | KIIC, Karawang, Jawa Barat | 2008
Yamaha Waste Water Treatment





www.livi-group.com

LiVi Construction

PT LIVIA ANDALAN INDONESIA

Head Office

Jl. Lambada 3 Blok L9/5 , Pesona Atlantis
Citra Raya - Tangerang 15710 Banten
T • 62 . 21 . 5940 7704 F • 62 . 21 . 5940 7705
E • info-const@livi-group.com

Representative Office

Office 8 Building, Lt. 18 Unit F, Lot 28 SCBD
Jl. Jend. Sudirman Kav. 52-53, Jakarta 12190
T • 62 . 21 . 2933 3718 F • 62 . 21 . 2933 3719

LiViCONSTRUCTION
rejuvenating solution

LiViINVENTION
rejuvenating the lane

LiViPARTNER
rejuvenating synergy

LiViCONSULT
rejuvenating perfection

LiViVENTURE
rejuvenating evolvement